



Across The Wall Pocket Track Kit Installation Instructions 4ATW Kit Series

The **4ATW Series** is for 1-3/8" to 1-3/4" doors up to 250 lbs. 60", 72" and 96" is for 1-Door Assembly and 144" is for 1-Door or 2-Door Assembly.

Contents:	1-Door Qty:	2-Door Qty:		
Wall-Mounted Track				
1.1 Wall-Mounted Track	1	1		
End Caps				
2.1 Left End Cap	1	1		
2.2 Right End Cap	1	1		
Fascia				
3.1 Fascia	1	1		
Center Stop Bumpers				
4.1 Center Stop Bumpers	2	4		
Wall-Mounted Adjustable Fin Guide				
5.1 Wall-Mounted Adjustable Fin Guide	1	2		
5.2 #6 x 7/8" FPHW Fin Guide Screw	2	4		
4-wheel Hanger Parts Bag				
6.1 Ball Bearing 4-wheel Roller - 250lb	2	4		
6.2 Hanger Plate	2	4		
6.3 Hanger Wrench	1	2		
6.4 M5.5 x 32mm PPHW Hanger Plate Screw	4	8		
6.5 Door Guide	2	4		
6.6 M4.2 x 13mm Washer PHW Door Guide Screw	2	4		

1 Fastening Recommendations

- Track mounting fasteners are not supplied due to differences in wall construction type and codes. Choose track mounting fasteners appropriate for the structure. Fasteners and the structural members they are attached to must be capable of 250lb shear and tension to support the maximum rated load. Follow local building codes for load-bearing items secured to the wall type. Local code supersedes any of the following recommendations.

WOOD FRAMING:

- Use #10 Type A or Type AB thread pan head or hex-washer head. Choose a length of screw so that 1" minimum is engaged into the supporting wall structural member.

STEEL FRAMING:

- Use #10 Type AB thread pan head or hex-washer head. Screw length must allow a minimum of three threads to protrude beyond inner wall of framing.

MASONRY WALLS:

- Use appropriate anchors for the wall material. Anchors and substrate must be able to support 250lb minimum shear and tension loads



2 Mount the Track

Note: Track is designed to be secured on 16" centers or less (to line up with wood or steel framing structures) and within 8" of each end. For walls with greater spacing between structural members, additional structure must be provided to achieve the required fastener spacing. A shim board may be required to space the track from the wall to clear the base or door molding and to provide a flat surface to mount the track. Depending on if a base or door moulding exists, a minimum of 1/4" clearance between the door and the wall or moulding is required.

- While keeping the track level, layout the location of the track on the wall. See Figure 1.
- Find the locations of the structural wall framing members or solid anchor points and transfer it to the track.
- At the transferred locations, drill clearance holes for the appropriate mounting fasteners (see Fastening Recommendations) through the groove provided in the track mounting surface
- Using the clearance holes on the track as a template, drill pilot holes on wall for the appropriate mounting fasteners (see Fastening Recommendations).
- Secure the track to the wall using the appropriate mounting fasteners (see Fastening Recommendations).

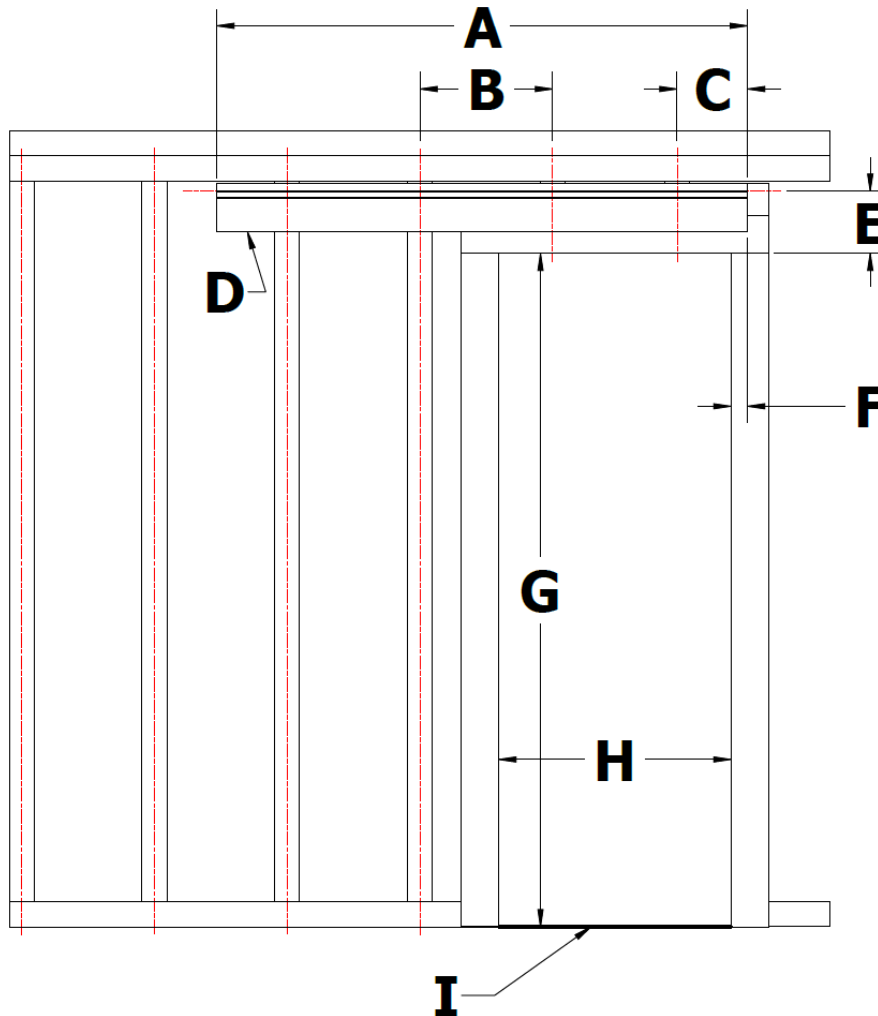


Figure 1

Note: Overlap is the amount of overlap between the Door and Finished Opening when the door is in fully closed position. Ideally, the top, left and right Overlap are equal.

Across The Wall Pocket Track Kit Installation Instructions 4ATW Kit Series

- A. Track and Fascia Length = (Actual Door Width * 2) – Overlap
Note: Cut the Track and Fascia if necessary
- B. 16.0" maximum distance between mounting fasteners
- C. 8.0" maximum unsecured section on either end
- D. Horizontal track position relative to the stud locations is determined by the Finished Opening location on the wall.
Position shown is for reference only.
- E. Overlap + 2-9/16"
- F. Overlap
- G. Finished Opening Height = Actual Door Height + 3/4" – Overlap
- H. Finished Opening Width = Actual Door Width – (Overlap * 2)
Note: Finished Openings shall provide a clear width of 32 inches minimum for ADA compliance.
- I. Finished floor

3 Prepare the Door

- Route the bottom of the door, 3/4" deep, using a 5/16" routing bit. See Figure 5
- Position both hanger plates center of the top door edge thickness. One 2-1/4" from the left door edge and the other 2-1/4" from the right door edge.
Note: Make sure the Hanger Plate latch is on the same side as the front side of the door. See Figure 2
- Create pilot holes using a 7/64" drill bit and the hanger plates as templates
- Install the hanger plates using the M5.5 x 32mm Pan Phillips Head Wood Screws

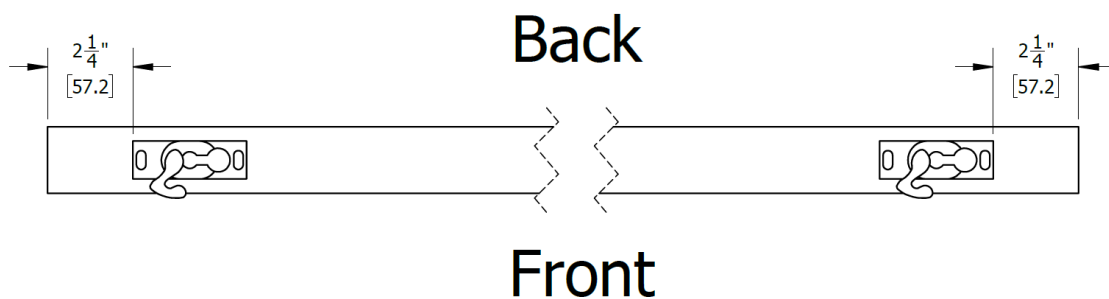


Figure 2



4 Hang the Door

- Insert the Ball Bearing 4-wheel Rollers into the Track
- Unlatch the hanger plates
- Slide the hanger plates' slot onto the 4-wheel rollers' bolt
- Latch the hanger plates
- Use the hanger wrench provided to adjust the door hangers

Note: There is about half an inch of adjustment that can be made with the door hangers. Leave about 3/4" clearance between the floor and the bottom edge of the door. See Figure 5. Make sure the door is level.

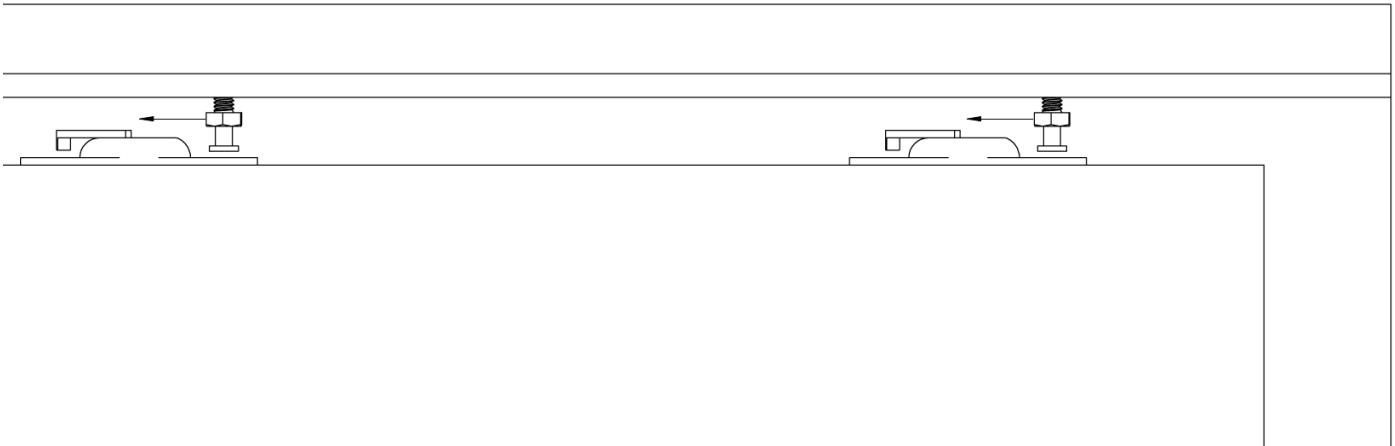


Figure 3

5 Mount the Center Stop Bumpers

- Mount a Center Stop Bumper 1-9/16" away from the left and right end of the Track.
Note: Make sure the Center Stop Bumpers are facing towards the door
- For a 2-door installation, install two Center Stop Bumpers in the middle of the Wall-Mounted Track length.
Note: Make sure the Center Stop Bumpers in the middle are facing away from each other

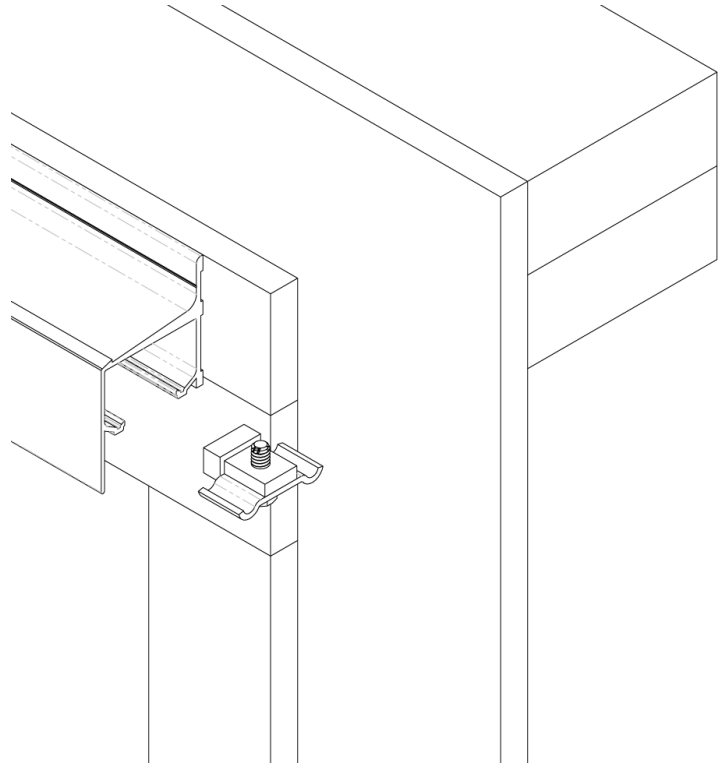


Figure 4

6 Mount the Adjustable Fin Guide

- Mount the Adjustable Fin Guide flush against the door jamb using the appropriate fasteners (not included) for the material of the wall
- Adjust the Fin Guide
- Tighten the screws
- Confirm that the Adjustable Fin Guide is always engaged to the door by fully opening and closing the door
- Adjust the Center Stop Bumpers if the Adjustable Fin Guide disengages with the door

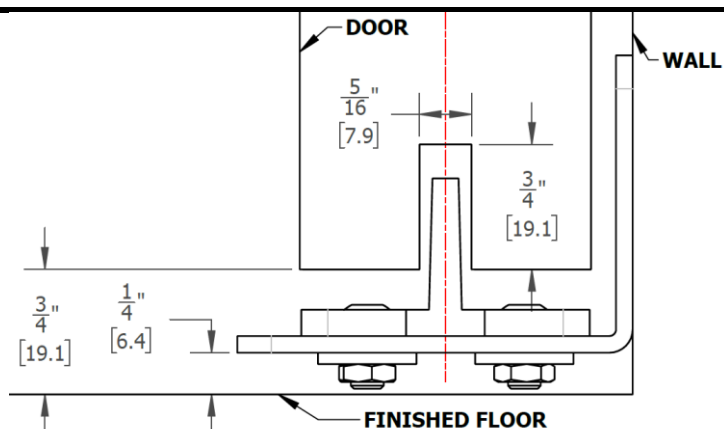


Figure 5

7 Attach the Fascia and Insert the End Caps

- Engage the bottom hook of the Fascia into the bottom edge of the Track face.
- Snap the top hook of the Fascia into the top edge of the Track face.
- Make sure the top and bottom hook are flush against the top and bottom edge of the Track face
- Insert the Left and Right End Caps to the left and right ends of the Track
- Adjust Center Stop Bumper if needed
- Tighten the Center Stop Bumper screw

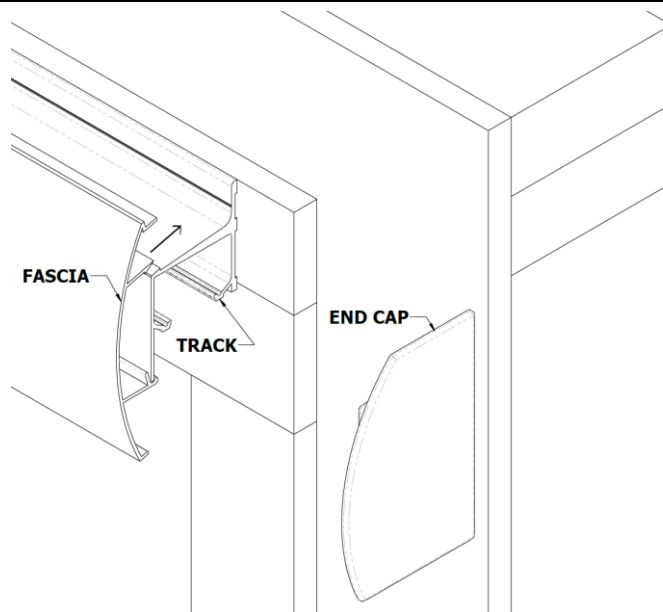


Figure 6

